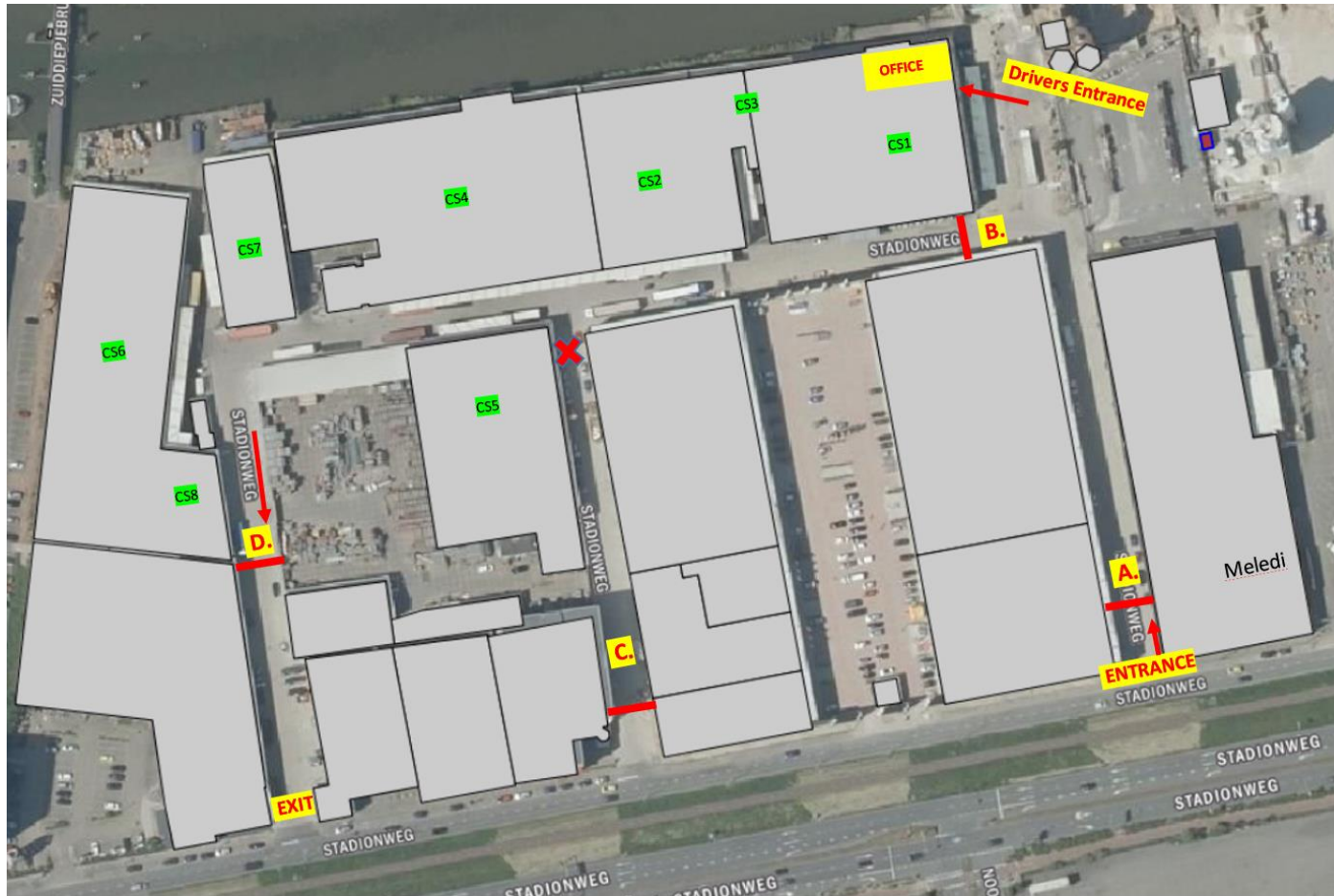


How to get here; Drivers info

- Drivers please report at the office via the drivers entrance
- Our warehouses are accessible via barrier (B), at the office you will receive a coin/token to open the barrier
- After loading; collect your papers - on foot - at the office
- Leave the area via the automatic barrier (D)



Note that on business days gates A, C and D will close automatically at 20:00 (and open at 05:30)